

# *Neotropical Diptera*

*Neotropical Diptera* 12: 1-7 (April 15, 2009)  
ISSN 1982-7121  
www.neotropicaldiptera.org

Depto. de Biologia - FFCLRP  
Universidade de São Paulo  
Ribeirão Preto, SP, Brazil

## Manual of Neotropical Diptera. Cuterebridae<sup>1</sup>

**Nelson Papavero**

Museu de Zoologia, Universidade de São Paulo, São Paulo, SP, Brasil  
Pesquisador Visitante do Departamento de Biologia, Faculdade de Filosofia, Ciências e Letras, Universidade de São Paulo, Ribeirão Preto, SP, Brasil

&

**†José Henrique Guimarães**

Departamento de Parasitologia, Instituto de Ciências Biomédicas  
Universidade de São Paulo  
São Paulo, SP

For a history of Cuterebridae studies, taxonomy, biology, list of hosts and vectors, control measures, and bibliography, see Catts, 1982, Sabrosky, 1986, Guimarães & Papavero, 1999a-b, and Slansky, 2007.

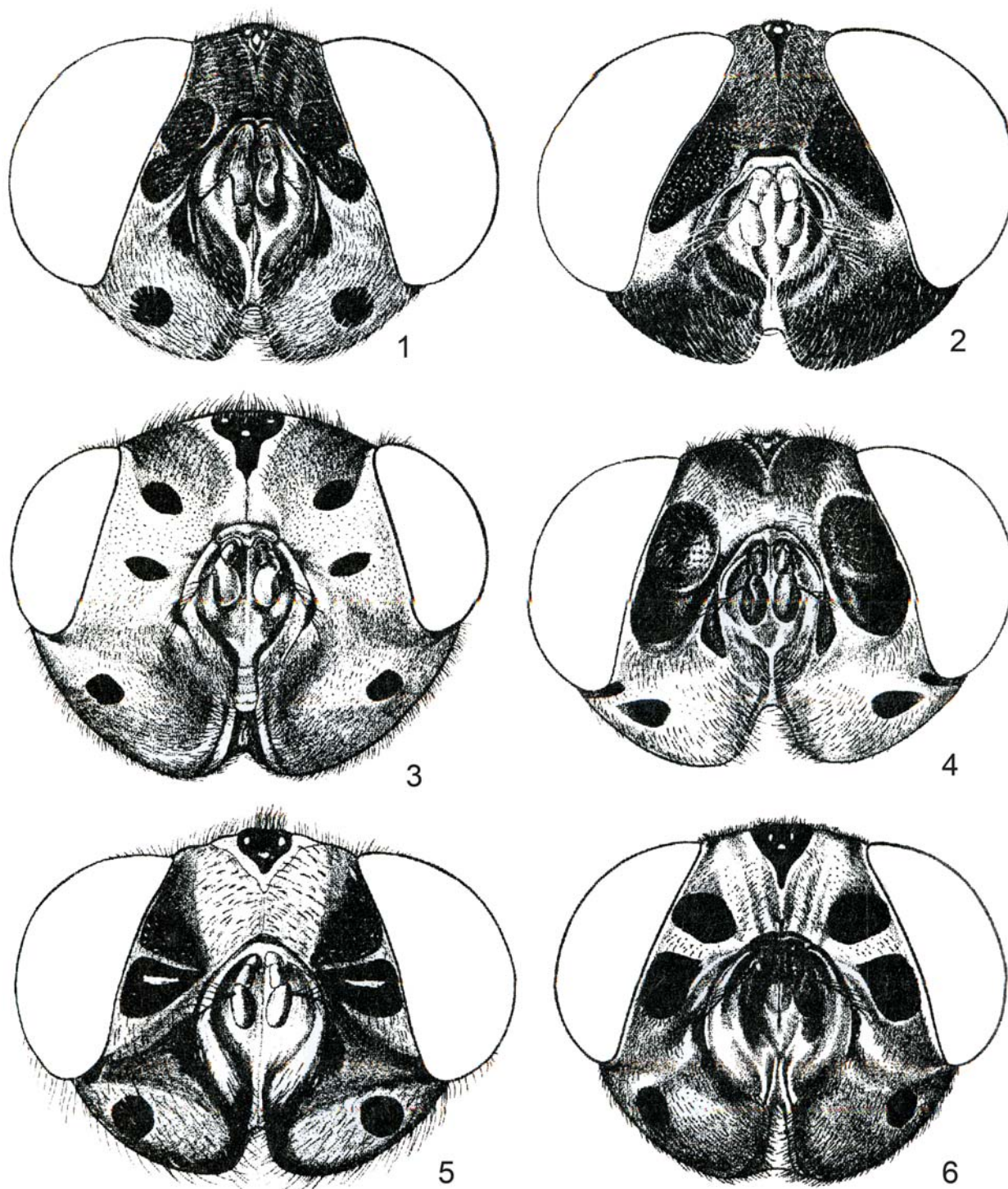
### Key to the genera

1. Facial carina absent or weakly developed (Fig. 1-10) ..... 2  
Facial carina strong (Figs. 11-16) ..... 4
- 2 (1). Medium-sized species (12-15 mm.). Abdomen metallic blue, with pink reflections (U. S. A to Argentina, but not in Chile) ..... *Dermatobia* Brauer, 1861  
Large and robust species. Abdomen dark-brown to black, never metallic blue ..... 3
- 3 (2). Arista laterally compressed, strongly ciliate to apex on both sides (Fig. 17) (Brazil: Minas Gerais, Rio de Janeiro, São Paulo) ..... *Pseudogametes* Bischof, 1900 [Pl. I, fig. 6]  
Arista ciliate, with cilia on upper surface only (Fig. 18) (Neotropical, but not in Chile) .....  
..... *Metacuterebra* Bau, 1929 [Pl. I, figs. 1, 3-5]
- 4 (1). Arista bare (Fig. 19). Neotropical species ..... 5  
Arista ciliate on upper surface only. Predominantly Nearctic species (except for *praegrans* and *sabroskyi*) (North and Central America, Peru (Loreto), Brazil (São Paulo) ..... *Cuterebra* Clark, 1815 [Pl. I, fig. 2]
- 5 (4). Facial plate strongly elongate and flattened from antennal basis to epistoma. Facial plate arms parallel sided (Fig. 11) (Colombia) ..... *Andinocuterebra* J. H. Guimarães, 1984  
Facial plate deeply sunken. Facial plate arms converging toward epistoma (Fig. 12) (Peru, Brazil, Argentina) .....  
..... *Rogenhoferia* Brauer, 1863

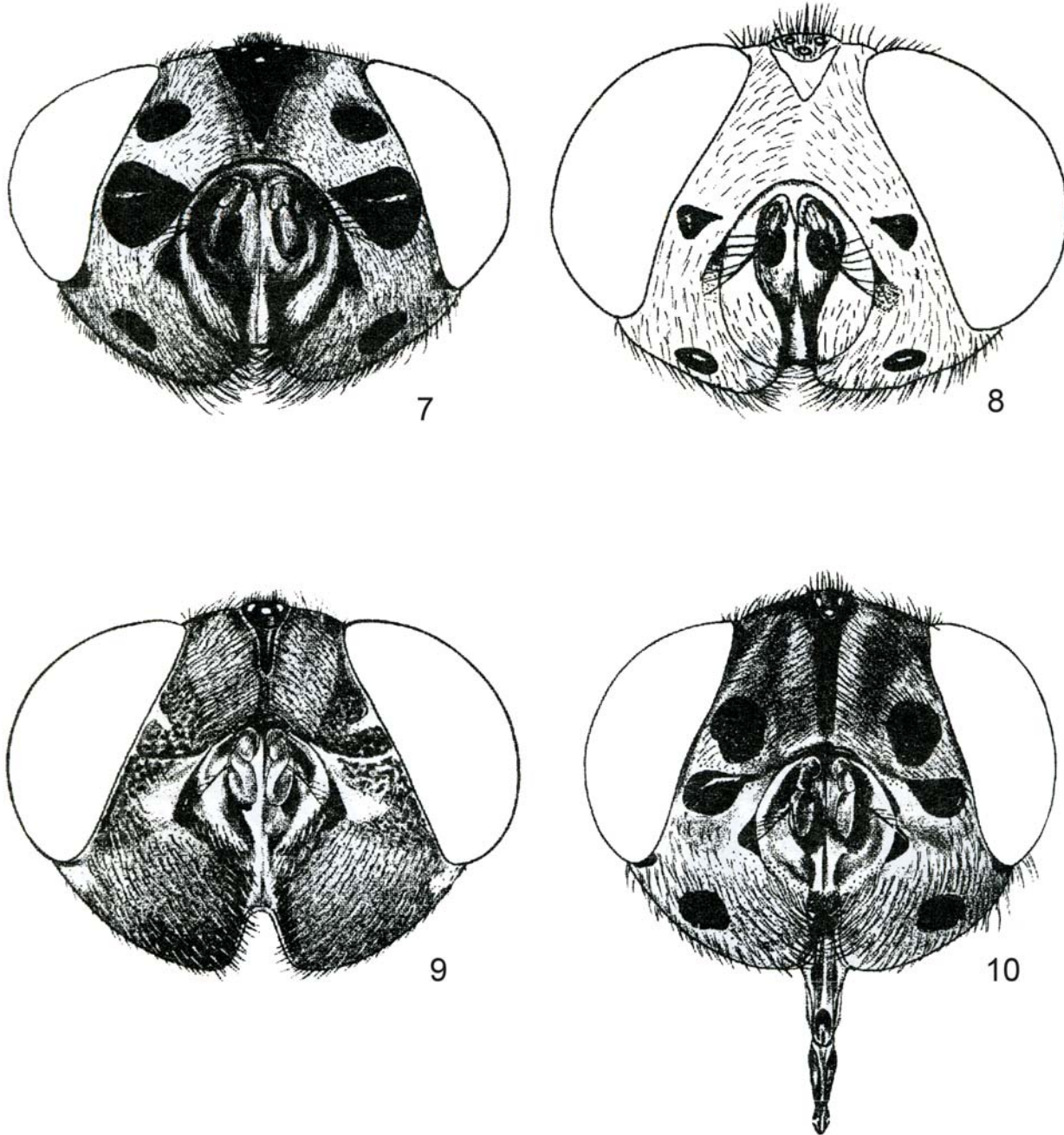
<sup>1</sup> This project was supported by FAPESP grants # 2003/10.274-9 and 2007/50878-1.

## References

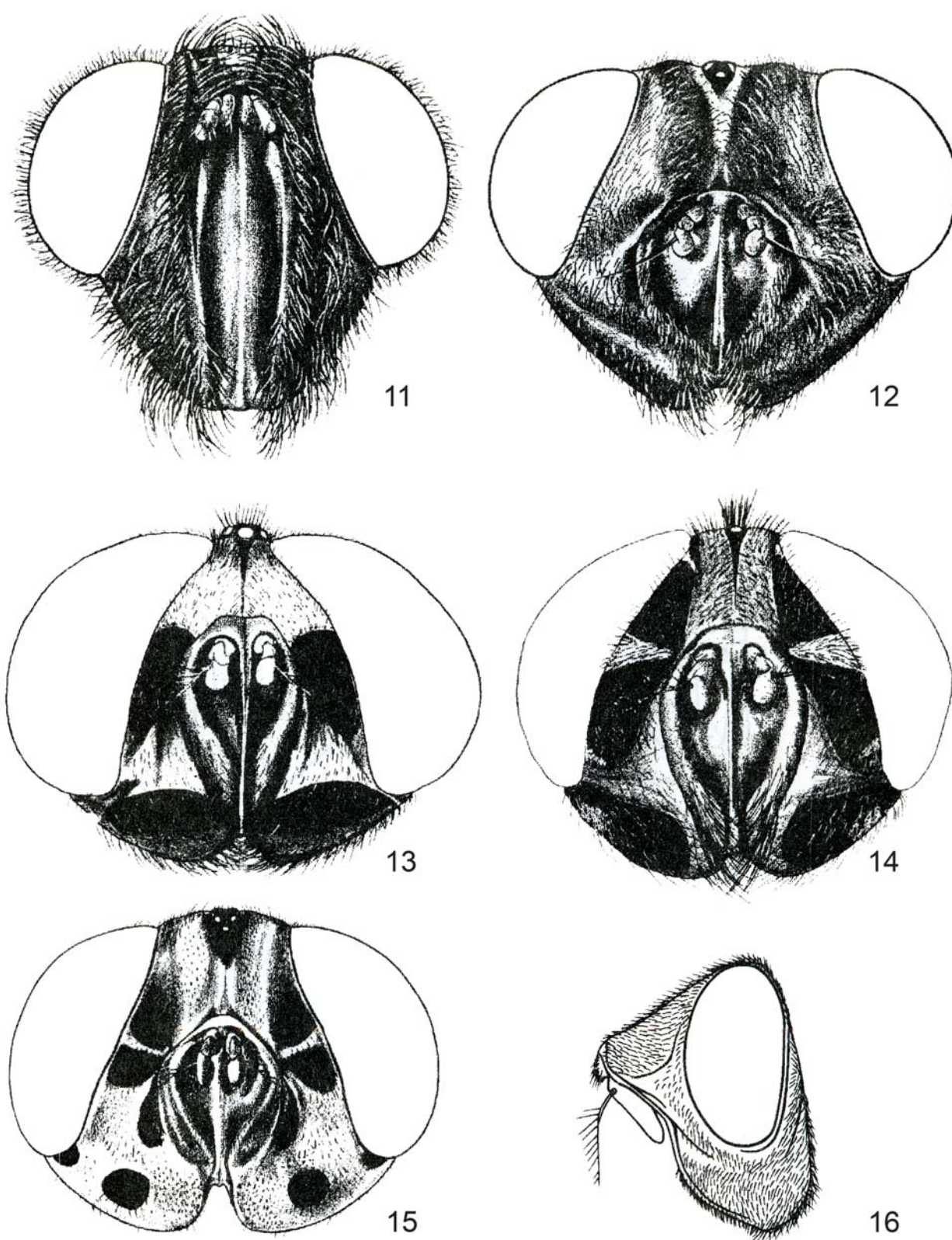
- Catts, E. P., Jr., 1982. Biology of New World bot flies: Cuterebridae. *Annu. Rev. Ent.* 27: 313-338, 2 figs., 1 table.
- Guimarães, J. H. & N. Papavero, 1999a. Revision of the South American Cuterebridae, pp. 193-255, figs. 82-123, in their *Myiasis in man and animals in the Neotropical Region. Bibliographic database*, 308 pp., 120 figs. Fundação de Amparo à Pesquisa do Estado de São Paulo & Editora Plêiade, São Paulo.
- Guimarães, J. H. & N. Papavero, 1999b. Myiasis caused by obligatory parasites. VI. *Dermatobia hominis* (Linnaeus Jr.) (Cuterebridae), pp. 257-302, figs. 124-129, in their *Myiasis in man and animals in the Neotropical Region. Bibliographic database*, 308 pp., 120 figs. Fundação de Amparo à Pesquisa do Estado de São Paulo & Editora Plêiade, São Paulo.
- Lutz, A., 1917. Contribuições ao conhecimento dos oestrideos brasileiros. *Mems Inst. Oswaldo Cruz*, Rio de Janeiro 9: 94-113, pls. 27-29.
- Sabrosky, C. W., 1986. *North American species of Cuterebra. The rabbit and rodent bot flies (Diptera: Cuterebridae)*, 240 pp. Thomas Says Foundation, Ent. Soc. Am., College Park, Maryland [Vol. 11].
- Slansky, F., 2007. Insect/mammal associations: Effects of cuterebrid bot fly parasites on their hosts. *Annu. Rev. Ent.* 52: 17-36.



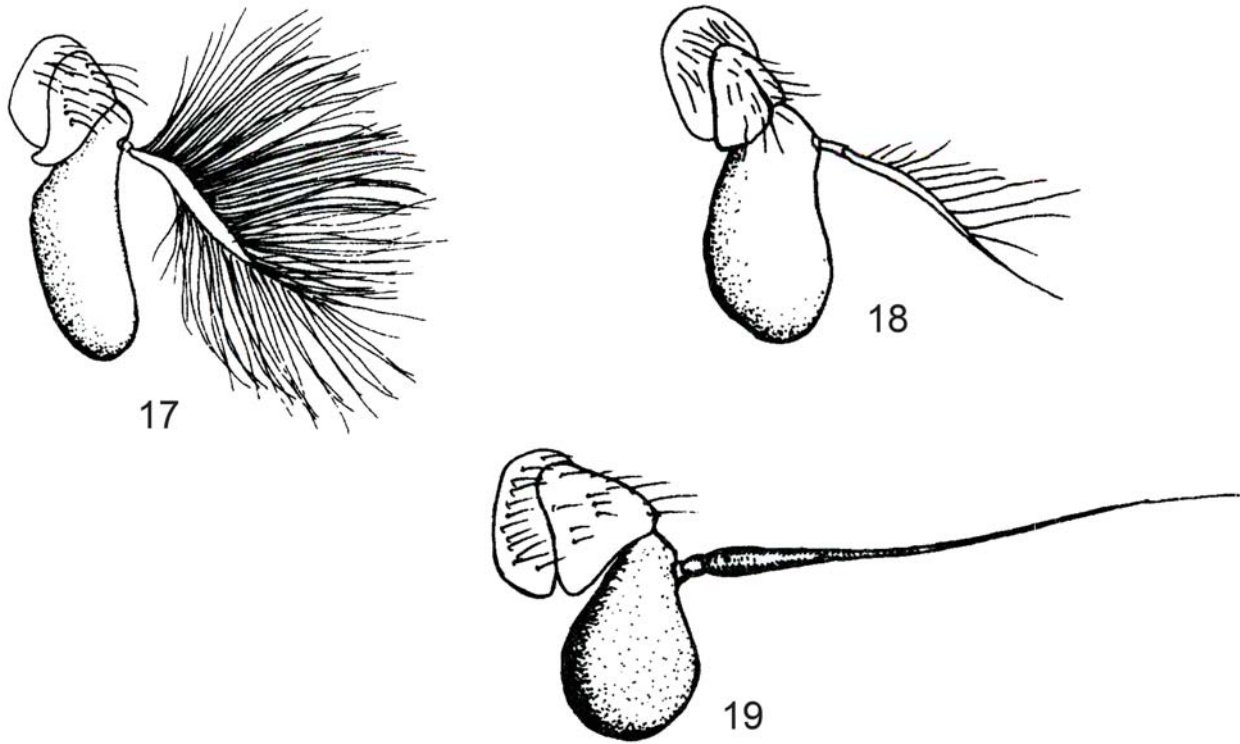
**Figures 1-6.** Neotropical species of Cuterebridae. Head, frontal view: 1, *Metacuterebra cayennensis* (Macquart, 1843), female; 2, *Metacuterebra baeri* (Greene, 1925), female; 3, *Metacuterebra patagona* (Guérin-Ménéville, 1844), female; 4, *Metacuterebra simulans* (Austen, 1933), female; 5, *Metacuterebra almeidai* (L. R. Guimarães & Carrera, 1941), male; 6, *Metacuterebra passoi* (L. R. Guimarães & Carrera, 1941), female. [Not in the same scale].



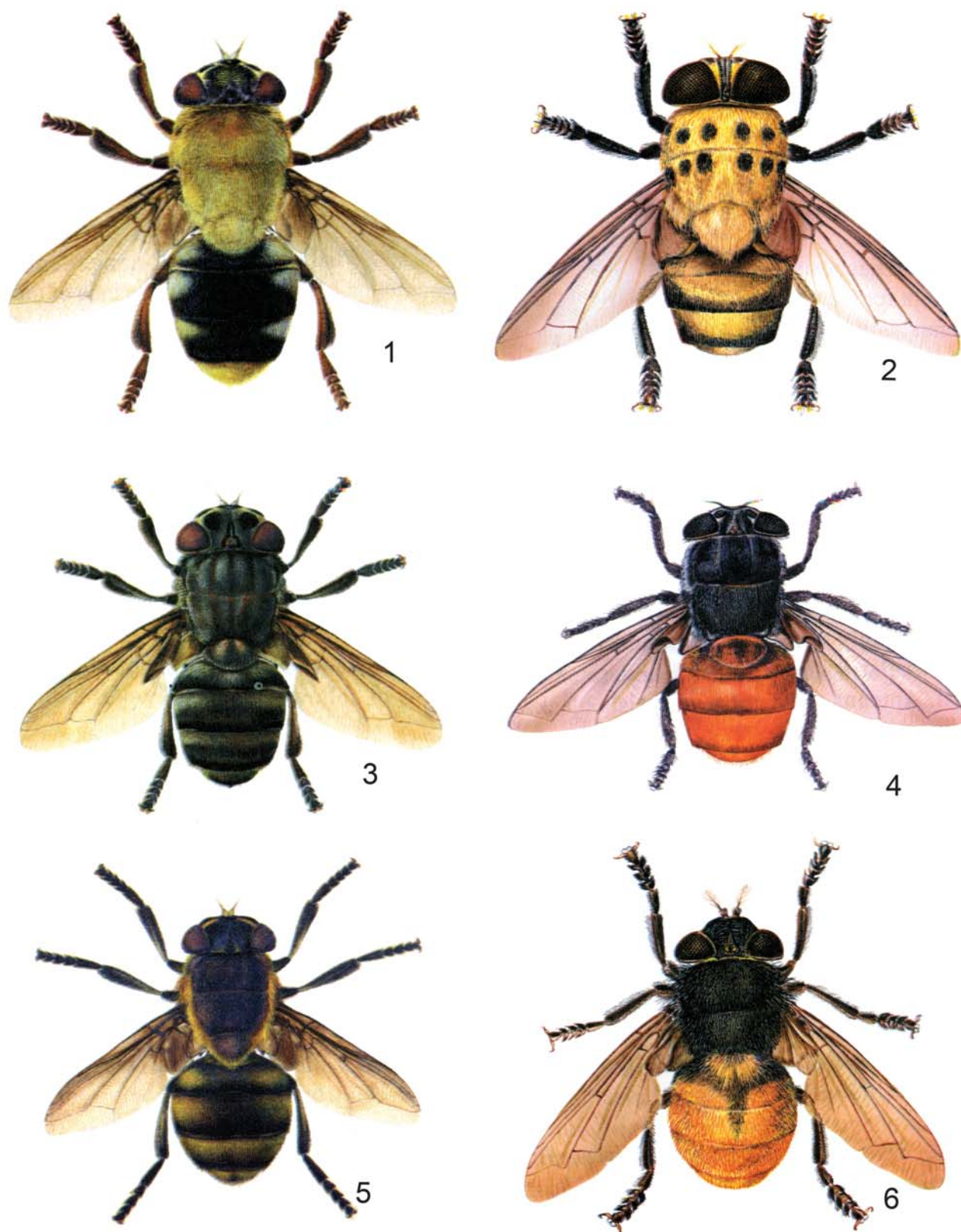
**Figures 7-10.** Neotropical species of Cuterebridae. Head, frontal view. 7. *Metacuterebra infulata* (Lutz, 1917), female. 8. *Metacuterebra cayennensis* (Macquart, 1843, male; 9, *Metacuterebra townsendi* (Fonseca, 1941), male; 10, *Megacuterebra megastoma* (Brauer, 1863), female. [Not in the same scale].



**Figures 11-16.** Neotropical species of Cuterebridae. Head, frontal view. 11, *Andinocuterebra fassleri* J. H. Guimarães, 1984, female; 12, *Rogenhoferia dasypoda* Brauer, 1896, female; 13, *Cuterebra praegrans* Austen, 1933, male; 14, *Cuterebra sabroskyi* (J. H. Guimarães, 1984), male; 15, *Metacuterebra apicalis* (Guérin-Méneville, 1835, male; 16, *Dermatobia hominis* (Linnaeus Jr., 1781), male. [Not in the same scale].



**Figures 17-19.** Neotropical species of Cuterebridae. Antennae. 17. *Pseudogametes* sp. 18. *Metacuterebra* sp. 19. *Rogenhoferia* sp. [Not in the same scale].



**Plate I.** Neotropical Cuterebridae. Habitus, adults. 1. *Metacuterebra apicalis* (Guérin-Ménéville, 1835), female. 2. *Cuterebra praegrans* Austen, 1933, male. 3. *Metacuterebra megastoma* (Brauer, 1863), female. 4. *Metacuterebra rufiventris* (Macquart, 1843), female. 5. *Metacuterebra infulata* (Lutz, 1917), female. 6. *Pseudogametes semiater* (Wiedemann, 1830), female. (Figures 1, 3 and 6 after Lutz, 1917). [Not in the same scale].

